

**PINK PROVIDES:**

- 1 9' Colonnade Fabric
- 1 Base Fabric

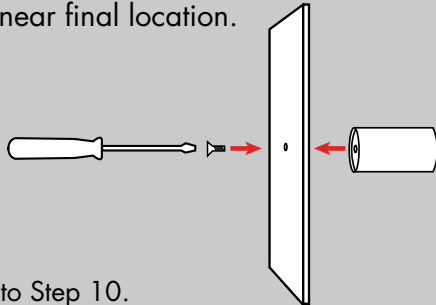
**YOU PROVIDE:**

- 9' Auto-Pole and Base Plate or Tie line if rigging
- Site Plan/Event Layout
- Two Person Team
- Shears or Diagonal Cutters
- Gloves
- Plastic Drop Cloth
- Zip-Ties



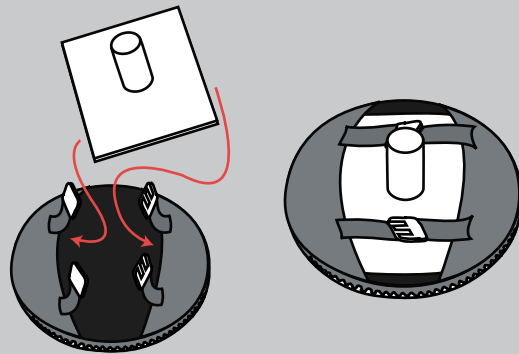
Additional Support Please Call:  
212-253-6666 or  
After Hours: 646-853-3900

If base plate is not assembled, assemble with nipple. Place near final location.



If rigging, skip to Step 10.

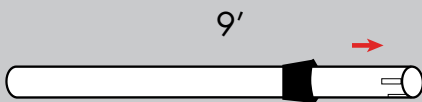
1. Place the Colonnade base fabric at the final location. Set the base plate into the base fabric and strap into place.



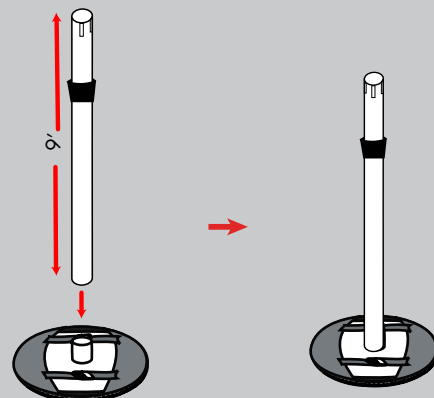
Strapping the base in will prevent it from shifting in later steps.

Prior to assembly, lay out drop cloth in designated work location. Before working with fabric, wash hands or put on gloves.

2. Preset the auto-pole to the correct height.

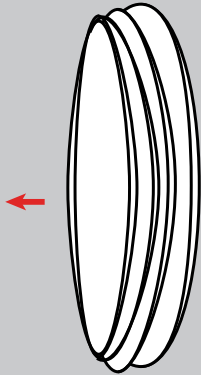


3. Place auto-pole onto assembled base plate.

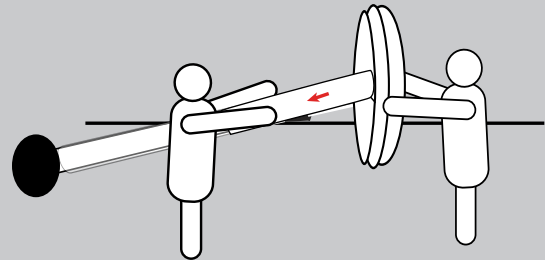


Any and all rights (including, without limitation, copyright, design patent, use patent and trademark) in and to all designs, concepts, renderings, or graphics (collectively, "Design") represented in this document were created by Moss Inc. and remain the sole and exclusive property of Moss Inc. Use of any such Design by the recipient without required purchase is strictly prohibited. ©2010

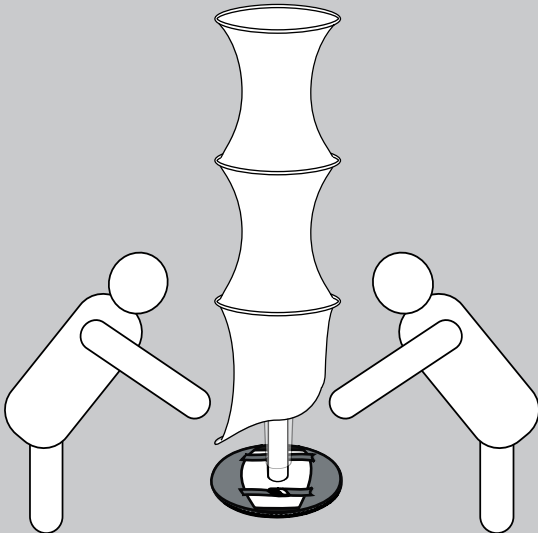
4. Locate the fabric. The open end will go over the pole and zip to the base cover.



5. Have one person tilt the pole and be ready to pull the fabric down. The other person should hold the Colonnade at the end of the pole. Pull the fabric as far as it will go down the pole. You will feel resistance when the pole reaches the top.



6. Stand the Colonnade upright. You will notice the zipper at the bottom, attached to the base. Have one person pull the ring down while the other zips the bottom closed.

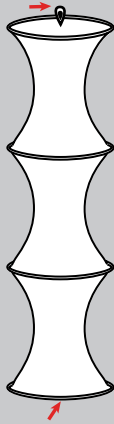


7. After the bottom is zipped, the Colonnade is finished.



Any and all rights (including, without limitation, copyright, design patent, use patent and trademark) in and to all designs, concepts, renderings, or graphics (collectively, "Design") represented in this document were created by Moss Inc. and remain the sole and exclusive property of Moss Inc. Use of any such Design by the recipient without required purchase is strictly prohibited. ©2010

8. The Colonnade can be rigged by attaching tie line to the loops located at the top and the crossed lines at the bottom. Be sure it is stretched to its full length.



Loops exaggerated in drawing.

Trouble Shooting:

- If fabric appears wrinkled:
  - \* Stretch the pole higher.
- If the top appears over-stretched:
  - \* Shorten the pole.
- If the bottom does not appear flat:
  - \* Add zip-ties between the base of the fabric and the base cover to areas that appear higher.

Any and all rights (including, without limitation, copyright, design patent, use patent and trademark) in and to all designs, concepts, renderings, or graphics (collectively, "Design") represented in this document were created by Moss Inc. and remain the sole and exclusive property of Moss Inc. Use of any such Design by the recipient without required purchase is strictly prohibited. ©2010