

**PINK PROVIDES:**

- 1 Set of Large Crescent Metals
- 1 Large Crescent Fabric
- Extra Pop Buttons

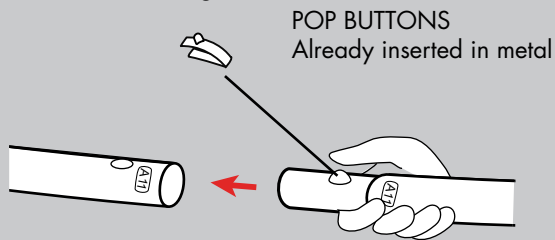
**YOU PROVIDE:**

- Site Plan/Event Layout
- Three Person Team
- Gloves
- Sewing Kit
- Plastic Drop Cloth
- Allen Key Set
- 3 Sandbags

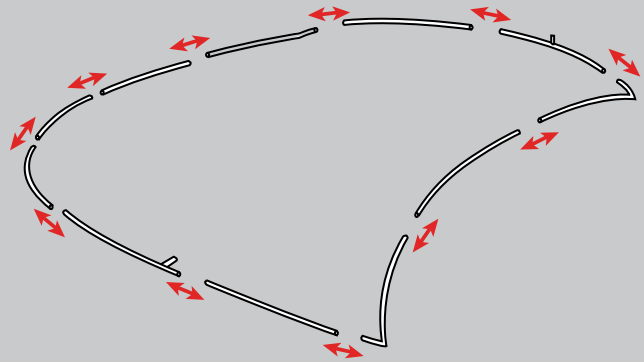


Additional Support Please Call:  
212-253-6666 or  
After Hours: 646-853-3900

Metals are labeled for easy assembly. Simply match the corresponding parts, depress the button, and slide together.

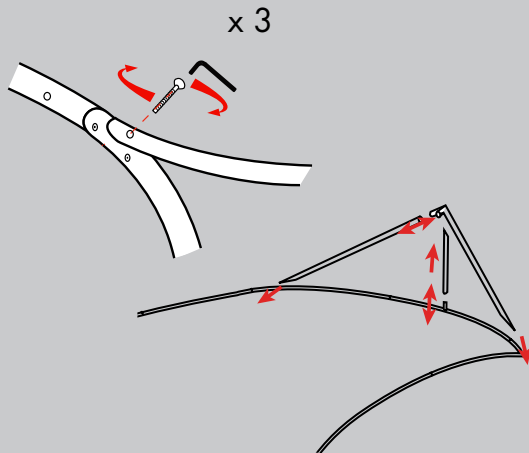


1. Join the shock-corded pieces together to create the Crescent front.

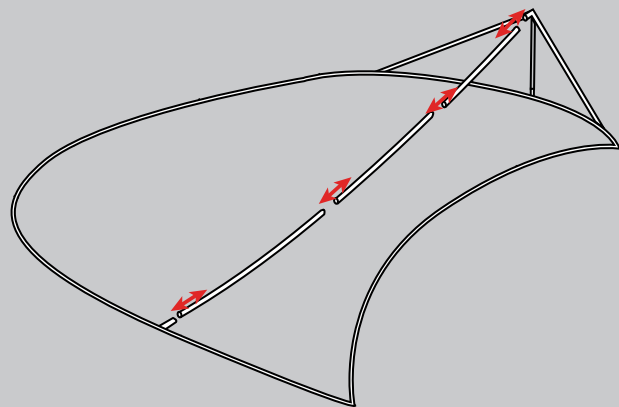


Prior to assembly, lay out drop cloth in designated work location. Before working with fabric, wash hands or put on gloves.

2. Attach the straight pieces which form the base. The end of these pieces may require an allen key to attach.

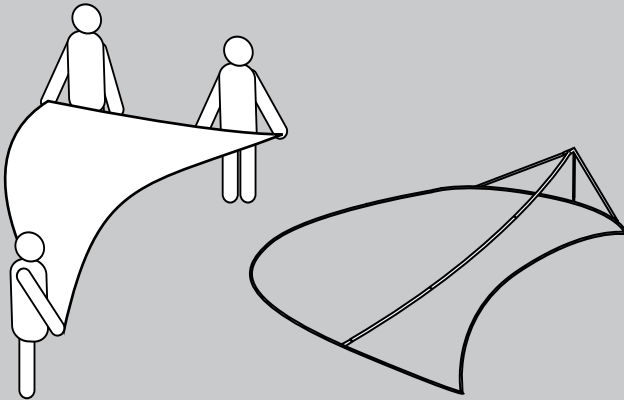


3. Attach the central supports from the base to the curve of the Crescent.

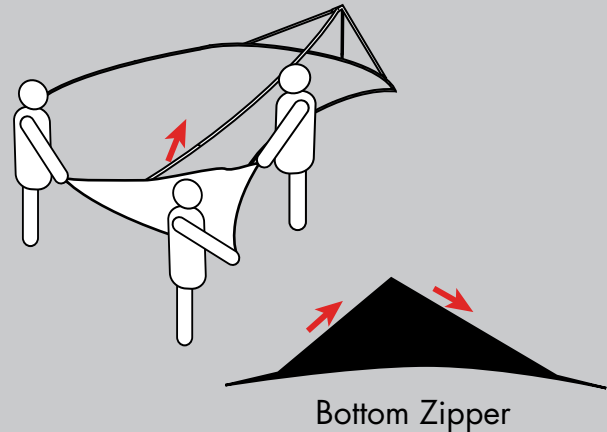


Any and all rights (including, without limitation, copyright, design patent, use patent and trademark) in and to all designs, concepts, renderings, or graphics (collectively, "Design") represented in this document were created by Moss Inc. and remain the sole and exclusive property of Moss Inc. Use of any such Design by the recipient without required purchase is strictly prohibited. ©2010

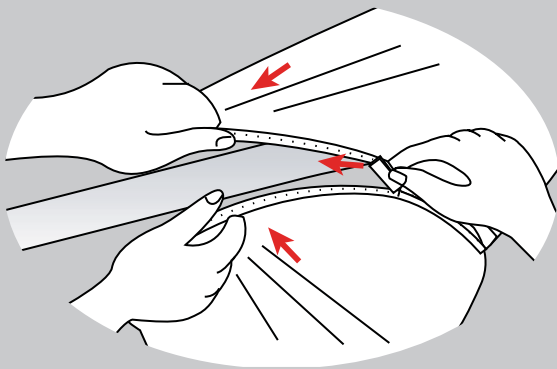
4. Locate the fabric and have all three people spread it out to determine the curves. The curve of the fabric aligns with the curve of the metal. It will not fit if the curves are going in opposite directions.



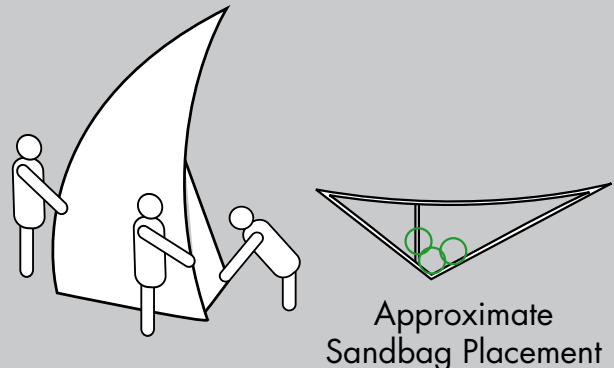
5. The fabric should be placed over the top point first. Spread the fabric over the frame. It will zip along the bottom in a triangular pattern. The bottom is made from thick black fabric.



6. Have one person pull the fabric over the metal while another one zips. The fabric is strong, so we encourage pulling tight!

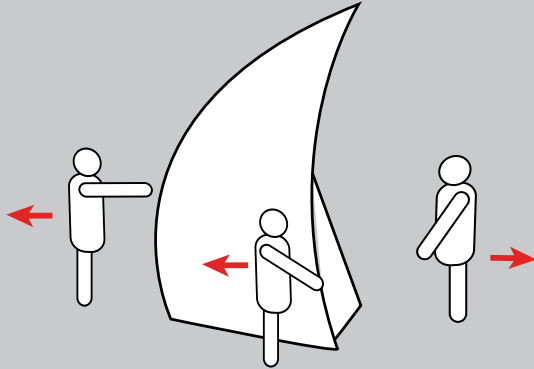


7. Stand the Crescent and position in final location. If using on stage or in a high traffic location, unzip the bottom partially, and insert sandbags to stabilize. Place sandbags on actual metals.

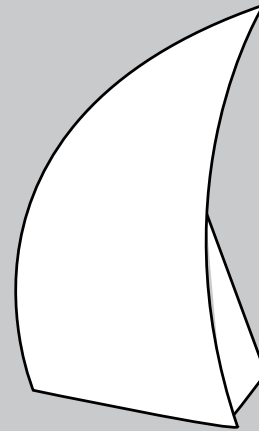


Any and all rights (including, without limitation, copyright, design patent, use patent and trademark) in and to all designs, concepts, renderings, or graphics (collectively, "Design") represented in this document were created by Moss Inc. and remain the sole and exclusive property of Moss Inc. Use of any such Design by the recipient without required purchase is strictly prohibited. ©2010

8. After the sandbags are inserted, slowly release the frame while checking for stability. If it appears wobbly, reposition sandbags. Make sure sandbags sit on the metals. Zip the bottom closed.



9. The Crescent is complete. If the final location moves, remove sandbags, place in new location, and then repeat steps 7 - 9.



**Trouble Shooting:**

- If the base doesn't seem to fit together:
  - \* Loosen the connection with the allen key, attach all pieces, and then retighten;
  - \* Attach the middle piece first and then the sides of the triangle; tighten the middle piece last using the allen key.
- If the Crescent is wobbly:
  - \* Place the sandbags onto the metals, away from the large flat surface.
- If the fabric doesn't seem to fit:
  - \* Make sure that the curves line up before placing fabric onto frame.

**Final Note:**

**Metals:**

After use, dismantle. Each metal is labeled; place back in the corresponding labeled bag. If possible, zip-tie pieces together.

Under NO circumstances should the metals be taped to one another.

**Fabric:**

Each fabric is labeled on the Pink Inc. tag and should be placed back in the corresponding labeled bag.

Any and all rights (including, without limitation, copyright, design patent, use patent and trademark) in and to all designs, concepts, renderings, or graphics (collectively, "Design") represented in this document were created by Moss Inc. and remain the sole and exclusive property of Moss Inc. Use of any such Design by the recipient without required purchase is strictly prohibited. ©2010