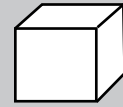


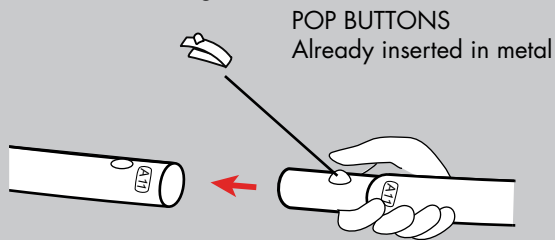
PINK PROVIDES:
1 Set of Cube Metals
1 Cube Fabric
Extra Pop Buttons

YOU PROVIDE:
Site Plan/Event Layout
Two Person Team
Gloves
Sewing Kit
Plastic Drop Cloth

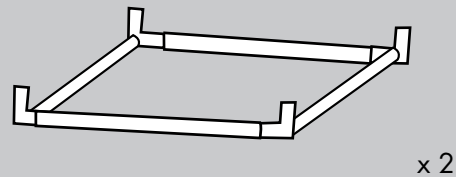


Additional Support Please Call:
212-253-6666 or
After Hours: 646-853-3900

Metals are labeled for easy assembly. Simply match the corresponding parts, depress the button, and slide together.

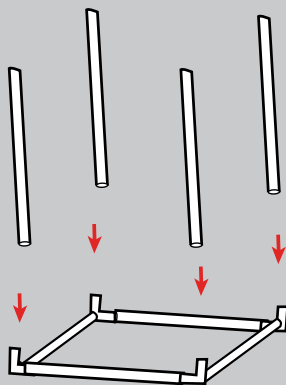


1. Locate the top and bottom pieces that are already assembled.



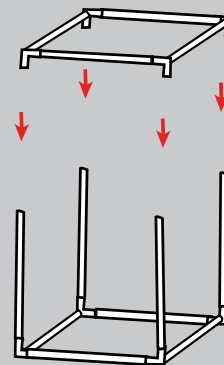
Prior to assembly, lay out drop cloth in designated work location. Before working with fabric, wash hands or put on gloves.

2. Attach the four 2' pieces to the bottom of the Cube.



Be sure to match the labels. This is very important.

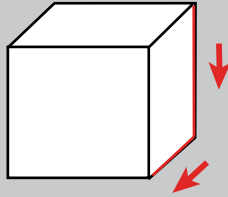
3. Place the top of the Cube onto the four side supports.



These will only slide together properly if all four pieces indicated are aligned prior to sliding into place.

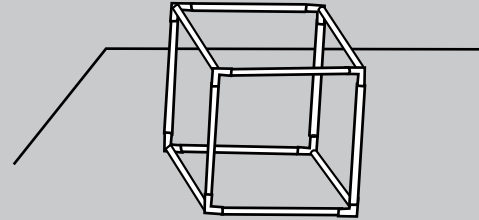
Any and all rights (including, without limitation, copyright, design patent, use patent and trademark) in and to all designs, concepts, renderings, or graphics (collectively, "Design") represented in this document were created by Moss Inc. and remain the sole and exclusive property of Moss Inc. Use of any such Design by the recipient without required purchase is strictly prohibited. ©2010

4. Locate the fabric. The zipper on the fabric will run along one side and then turn down another.

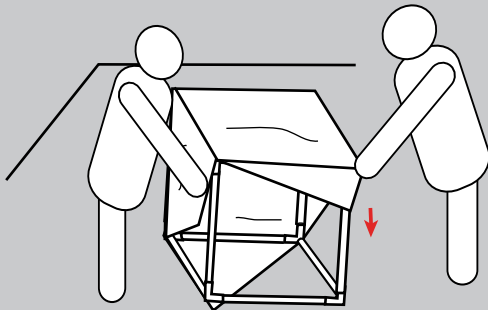


The piece is reversible and symmetric so it does not matter which side the zipper sits on. Zipper shown in red.

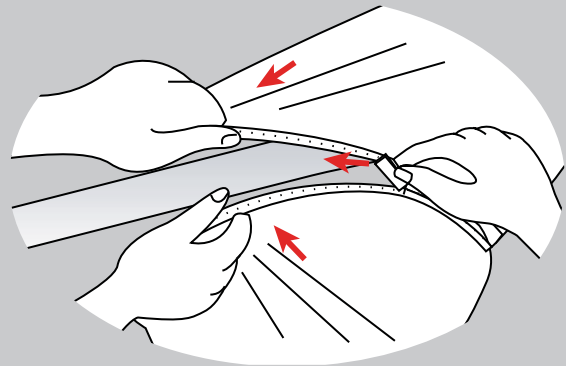
5. It is easiest to set the fabric onto the metals. Place the metals onto the drop cloth.



6. Slide the fabric onto the metal.

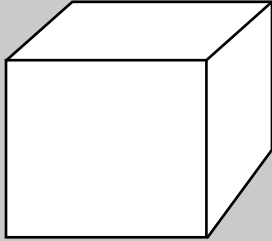


7. Have one person pull the fabric over the metal while the other one zips. The fabric is strong, so we encourage pulling hard!



Any and all rights (including, without limitation, copyright, design patent, use patent and trademark) in and to all designs, concepts, renderings, or graphics (collectively, "Design") represented in this document were created by Moss Inc. and remain the sole and exclusive property of Moss Inc. Use of any such Design by the recipient without required purchase is strictly prohibited. ©2010

8. Flip again so the zipper side is down. The Cube is now complete.



Final Note:

Metals:

After use, dismantle. Each metal is labeled; place back in the corresponding labeled bag. If possible, zip-tie pieces together.

Under NO circumstances should the metals be taped to one another.

Fabric:

Each fabric is labeled on the Pink Inc. tag and should be placed back in the corresponding labeled bag.

Any and all rights (including, without limitation, copyright, design patent, use patent and trademark) in and to all designs, concepts, renderings, or graphics (collectively, "Design") represented in this document were created by Moss Inc. and remain the sole and exclusive property of Moss Inc. Use of any such Design by the recipient without required purchase is strictly prohibited. ©2010