

**PINK PROVIDES:**

- 1 DNA Hub
- 1 DNA Fabric
- 2 2' Full Moons
- 1 Pole and Base Cover

**YOU PROVIDE:**

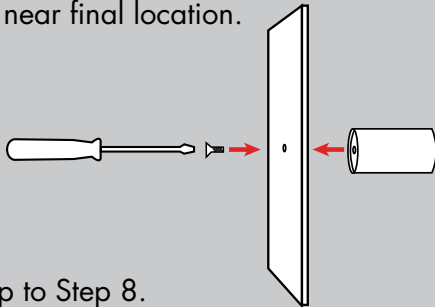
- 4' Auto-Pole and Base Plate  
or Tie line if rigging
- Site Plan/Event Layout
- Two Person Team
- Shears or Diagonal Cutters
- Gloves
- Plastic Drop Cloth
- Zip-Ties



Additional Support Please Call:  
212-253-6666 or  
After Hours: 646-853-3900

Pink Inc. recommends renting an Easy-Up for easier installation.

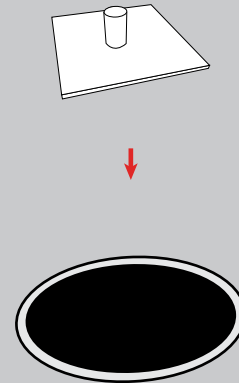
If base plate is not assembled, assemble with nipple. Place near final location.



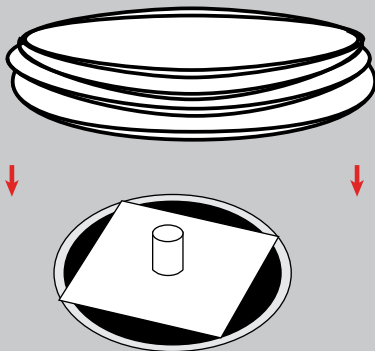
If rigging, skip to Step 8.

Prior to assembly, lay out drop cloth in designated work location. Before working with fabric, wash hands or put on gloves.

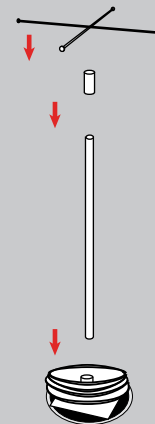
1. Place the base plate on top of one of the 2' Full Moons.



2. Locate the DNA and place it centered over the pin of the base plate. Leave on the ground until step 4.

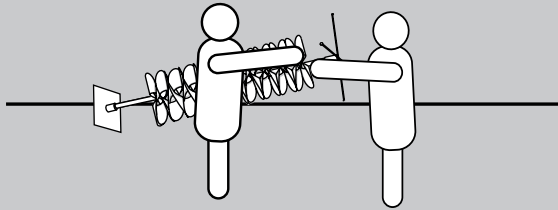


3. Attach the rest of the Easy-Up pieces to the base plate pin. If using pole cover, place on Easy-Up before attaching top pieces.

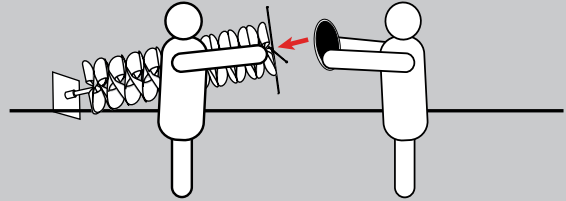


Any and all rights (including, without limitation, copyright, design patent, use patent and trademark) in and to all designs, concepts, renderings, or graphics (collectively, "Design") represented in this document were created by Moss Inc. and remain the sole and exclusive property of Moss Inc. Use of any such Design by the recipient without required purchase is strictly prohibited. ©2010

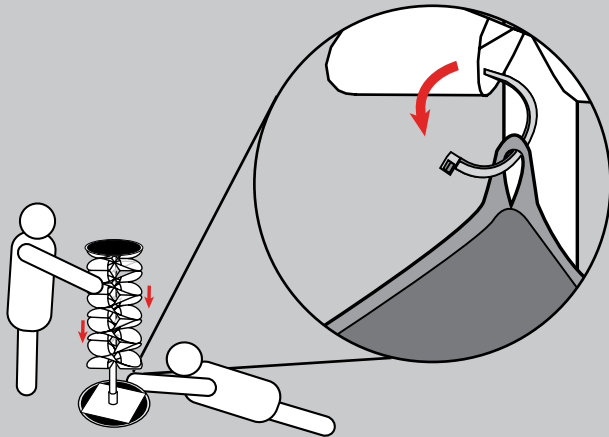
4. Tilt the Easy-Up and have one person support the top end. The other person should then pull the DNA towards the top.



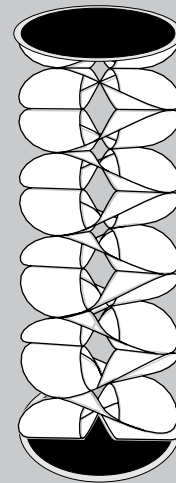
5. Take the other Full Moon and zip-tie it to the DNA top through the four loops.



6. Pull the bottom of the DNA down and zip-tie it to the four loops on the bottom Full Moon.

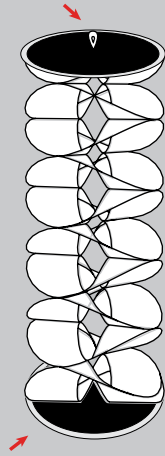


7. The DNA is finished.



Any and all rights (including, without limitation, copyright, design patent, use patent and trademark) in and to all designs, concepts, renderings, or graphics (collectively, "Design") represented in this document were created by Moss Inc. and remain the sole and exclusive property of Moss Inc. Use of any such Design by the recipient without required purchase is strictly prohibited. ©2010

8. The DNA can be rigged by attaching tie lines to the top and bottom of the DNA. Be sure it is stretched to its full length.



Loops exaggerated in drawing.

Any and all rights (including, without limitation, copyright, design patent, use patent and trademark) in and to all designs, concepts, renderings, or graphics (collectively, "Design") represented in this document were created by Moss Inc. and remain the sole and exclusive property of Moss Inc. Use of any such Design by the recipient without required purchase is strictly prohibited. ©2010