

**PINK PROVIDES:**

- 1 Fruit Salad Fabric with Attached Metal Plate (DO NOT UNBUNDLE)
- 2 Metal Pipes
- 1 Metal Pipe with Ball Top
- 3 Spiral Auger Stakes
- 6 9" Tent Stakes
- 12 6" Tent Stakes

**YOU PROVIDE:**

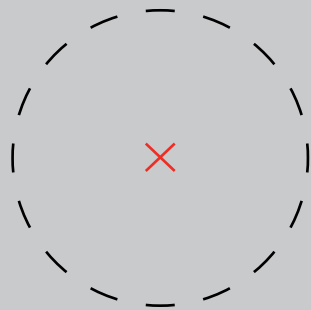
- Site Plan/Event Layout
- Four Person Team min.
- Plastic Drop Cloth
- Sewing Kit
- Shears or Diagonal Cutters
- Rubber Mallet
- Tie Line 300 ft min
- Quick Links
- Gloves



Due to the uniqueness of each Fruit Salad installation, we highly recommend hiring a Pink Inc. installation supervisor.

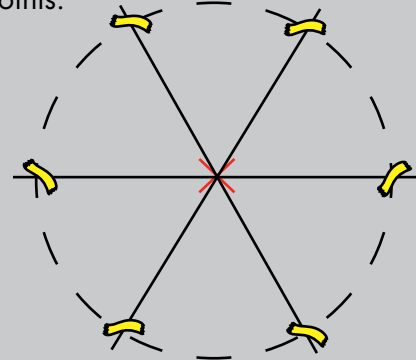
Additional Support Please Call:  
212-253-6666 or  
After Hours: 646-853-3900

1. **Determine Rigging Points:**  
To hang and stretch evenly, make a plan on the ground first. Plan out an area with a 30' diam. circle and locate the center.

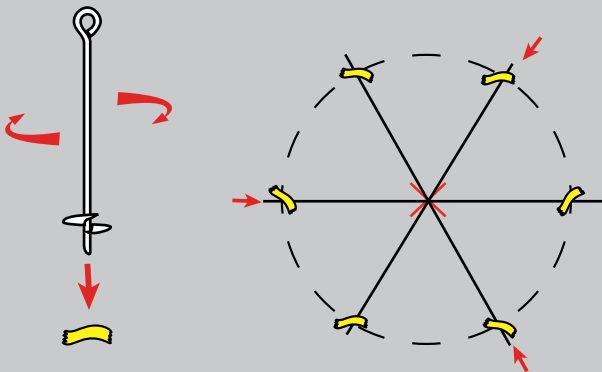


The larger circle allows for more stretch and room for adjustment later.

2. From the center, divide the circle into six equal portions. The six resulting points will be used to determine the pick-up points and should be marked or flagged. The pick-up points will be directly above these points.

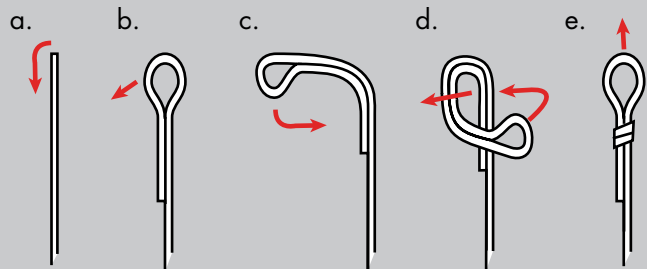


3. Choose 3 alternating points on the circle. At these points twist the spiral auger stakes into the ground.



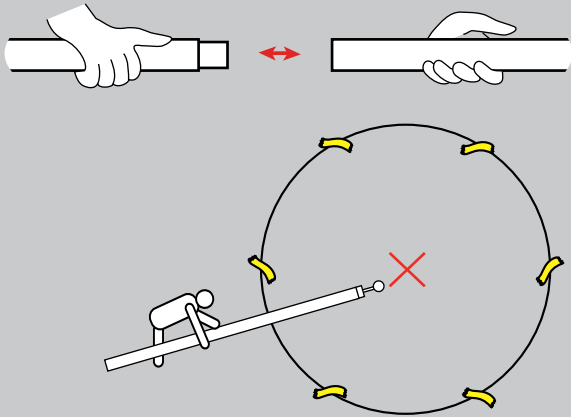
To make twisting easier, use a screwdriver as a handle through the hold in the stake.

4. Pre-cut 3 tie line ropes to 25'. Create a loop on one end of each rope with the following knot. The loop must not exceed 1" in diameter.

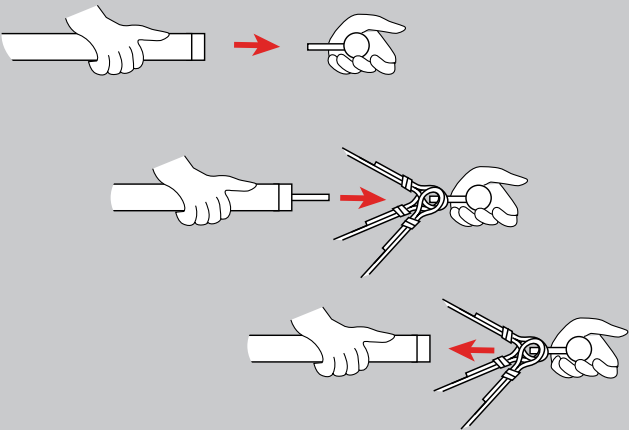


Any and all rights (including, without limitation, copyright, design patent, use patent and trademark) in and to all designs, concepts, renderings, or graphics (collectively, "Design") represented in this document were created by Moss Inc. and remain the sole and exclusive property of Moss Inc. Use of any such Design by the recipient without required purchase is strictly prohibited. ©2010

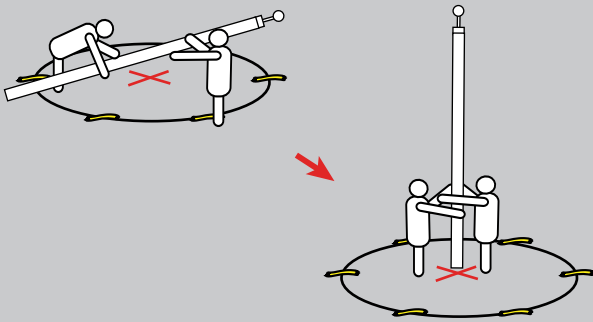
5. Locate the three poles and insert one into the other as indicated below until all pieces are attached. The end with the ball exposed is the top piece. Place the top of the pole at the center of the circle.



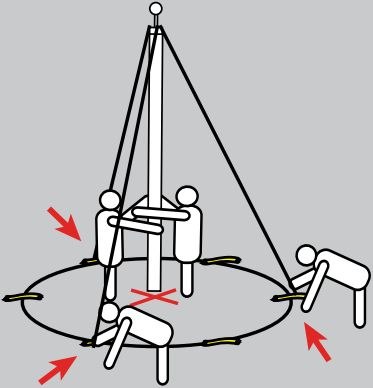
6. Unscrew the ball from the top of the pole. Slide the looped end of the prepped lines onto the screw. Screw the ball back onto the top of the pole.



7. Have two people walk the pole into upright position over the center point.



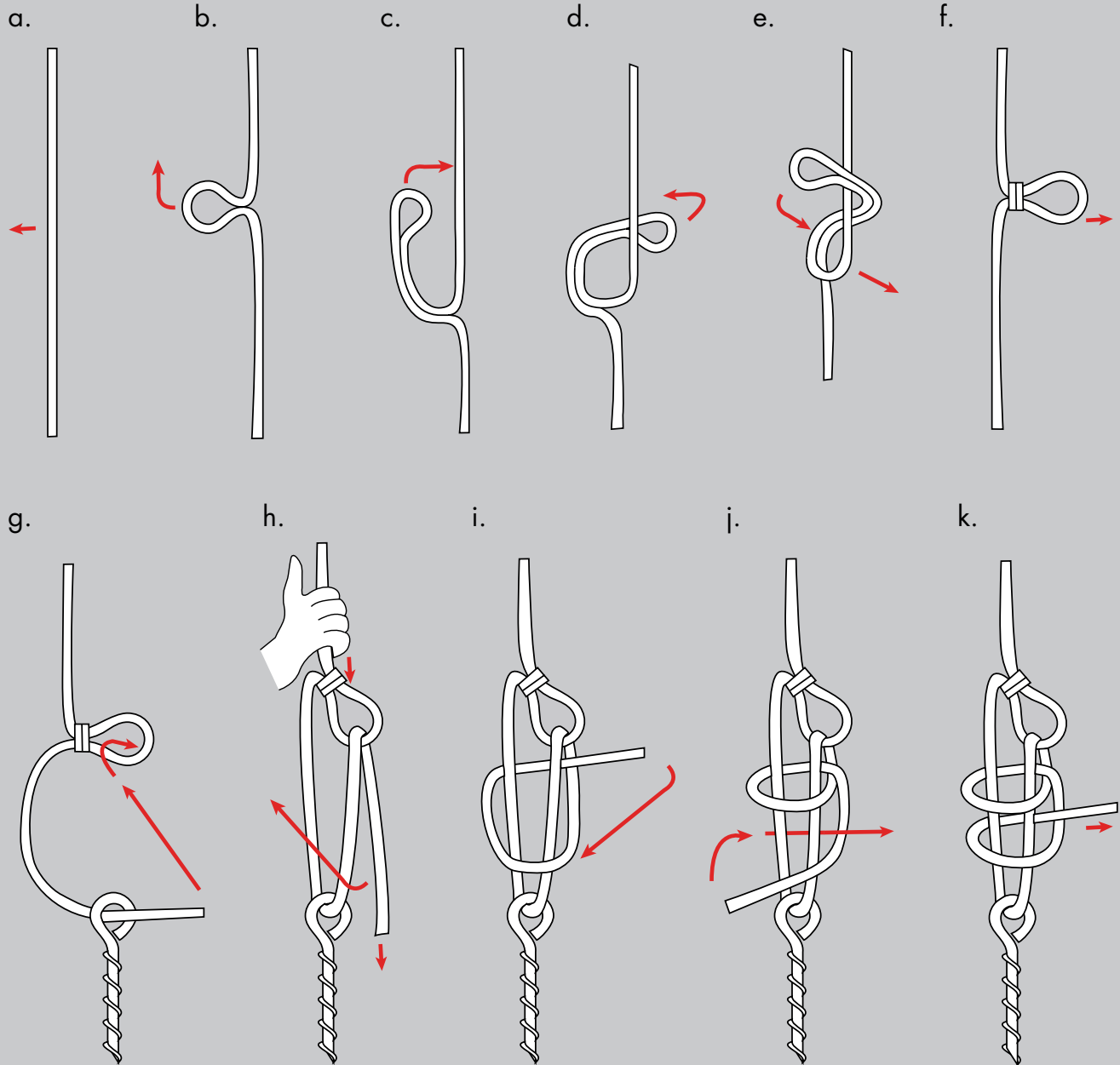
8. While the two people continue to hold the pole in place, have the other two people tie the tie line to the auger stakes using a truckers hitch.



Truckers hitch is diagramed on the next page.

Any and all rights (including, without limitation, copyright, design patent, use patent and trademark) in and to all designs, concepts, renderings, or graphics (collectively, "Design") represented in this document were created by Moss Inc. and remain the sole and exclusive property of Moss Inc. Use of any such Design by the recipient without required purchase is strictly prohibited. ©2010

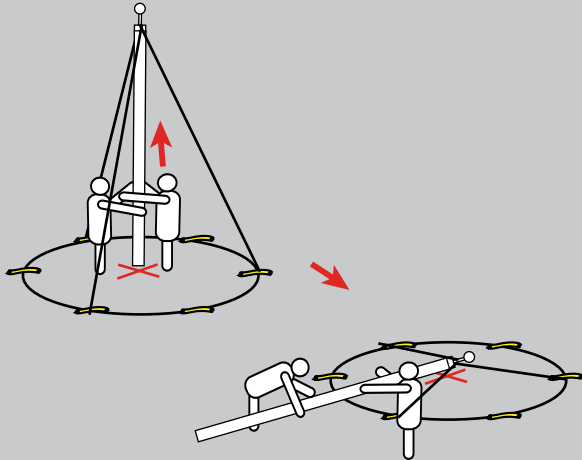
9. How to tie a truckers hitch:



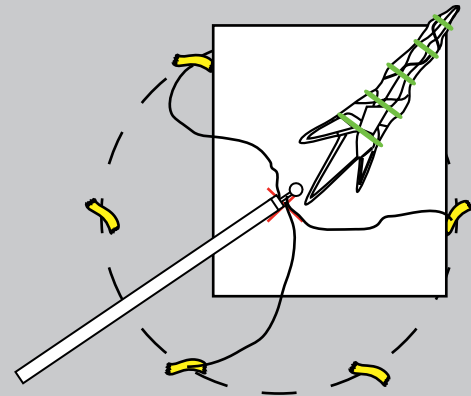
Pull down tight  
above the loop  
and on the end.

Any and all rights (including, without limitation, copyright, design patent, use patent and trademark) in and to all designs, concepts, renderings, or graphics (collectively, "Design") represented in this document were created by Moss Inc. and remain the sole and exclusive property of Moss Inc. Use of any such Design by the recipient without required purchase is strictly prohibited. ©2010

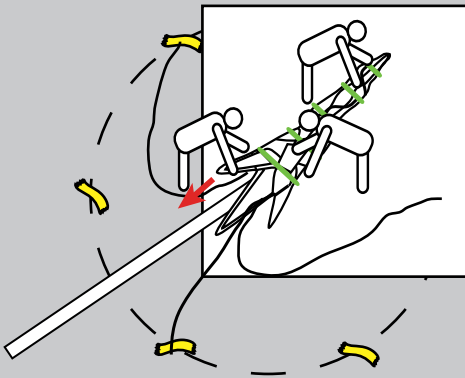
9. Once the lines are tied down, lift the pole straight up and then lower it back to the ground. The ball should be near the center of the circle.



10. Before handling the fabric, wash hands and lay out the drop cloth near the top of the pole. Place the bundled fabric onto the cloth. Loosen the ties but do not unbundle.

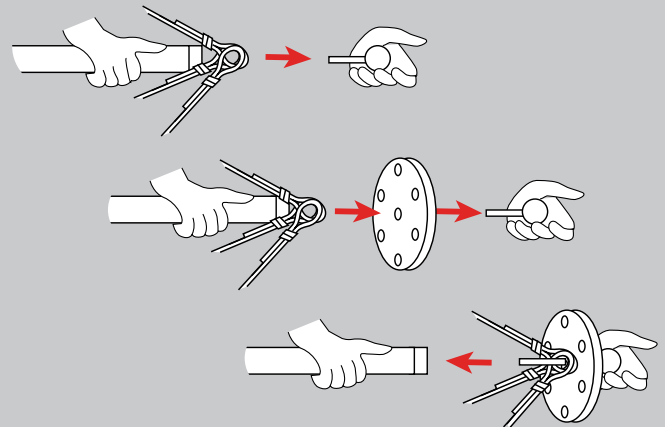


11. Due to limited movement of the pole, the fabric must be maneuvered over the pole. The metal plate is at the top of the fabric. Slide the bottom end over the top of the pole.



While sliding, loosen the ties as needed but do not unbundle.

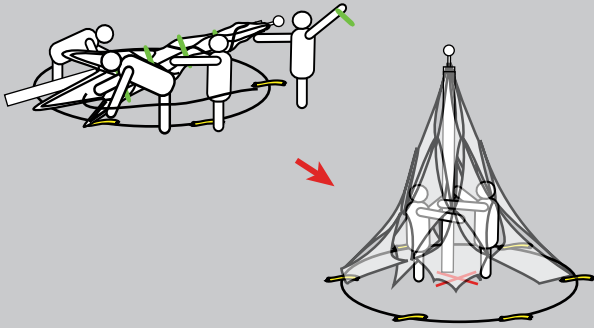
12. When the ball reaches the metal plate, unscrew the ball from the top of the pole. Slide the screw through the center of the metal plate, then screw the ball back onto the top of the pole.



Fabric not shown in diagram.

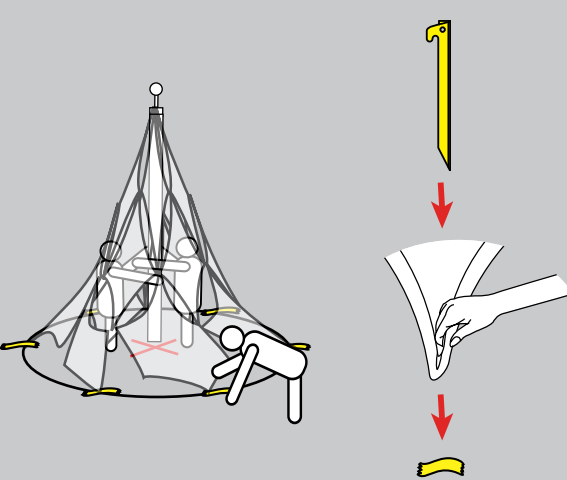
Any and all rights (including, without limitation, copyright, design patent, use patent and trademark) in and to all designs, concepts, renderings, or graphics (collectively, "Design") represented in this document were created by Moss Inc. and remain the sole and exclusive property of Moss Inc. Use of any such Design by the recipient without required purchase is strictly prohibited. ©2010

13. Have three people walk the pole back into upright position over the center point. The remaining person should move the drop cloth and unbundle the fabric from the top down.

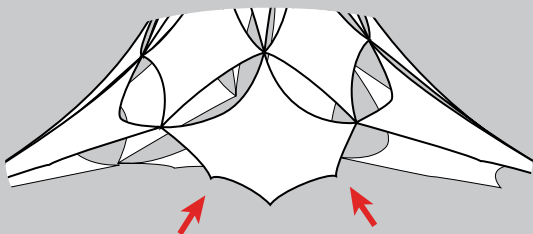


This is the most difficult step. In windy conditions, use extra people.

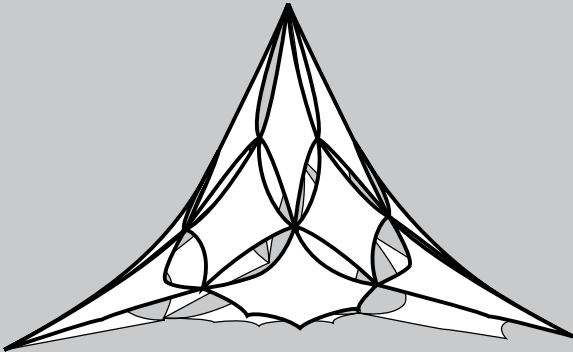
14. When the pole is up, have two people keep it steady. The other two people should move opposite each other and stake down the 6 main points using the 12" stakes and a rubber mallet.



15. After the 6 main points are staked down, the structure is sturdy enough to stand on its own. If desired, use the 6" stakes to hold down the additional 12 points, located to the left and right of the main points.



16. Once all points are staked down, the Fruit Salad is complete.



Any and all rights (including, without limitation, copyright, design patent, use patent and trademark) in and to all designs, concepts, renderings, or graphics (collectively, "Design") represented in this document were created by Moss Inc. and remain the sole and exclusive property of Moss Inc. Use of any such Design by the recipient without required purchase is strictly prohibited. ©2010

Trouble Shooting:

- If you cannot stake to the ground:
  - \* Rig the central point at 18'. If you are still using the central pole, rig four points from the top that are lower than 18';
  - \* Use weights or sandbags to hold base points in place;
  - \* The base points need to be stretched lower than the highest point;
  - \* Look for existing stable structures such as fences, flag poles, hooks, etc. In some cases, we have stretched line up to 100' to existing points for rigging purposes.

Any and all rights (including, without limitation, copyright, design patent, use patent and trademark) in and to all designs, concepts, renderings, or graphics (collectively, "Design") represented in this document were created by Moss Inc. and remain the sole and exclusive property of Moss Inc. Use of any such Design by the recipient without required purchase is strictly prohibited. ©2010