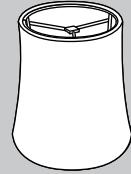


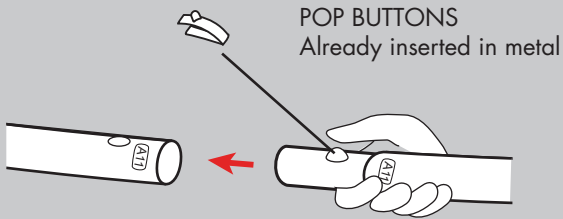
PINK PROVIDES:
1 Lampshade Fabric
1 Set of Lampshade Metals
Extra Pop Buttons

YOU PROVIDE:
Site Plan/Event Layout
Two Person Team
Plastic Drop Cloth
Tie Line
Zip-Ties
Safety Cables



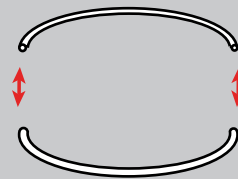
Additional Support Please Call:
212-253-6666 or
After Hours: 646-853-3900

Metals are labeled for easy assembly. Simply match the corresponding parts, depress the button, and slide together.

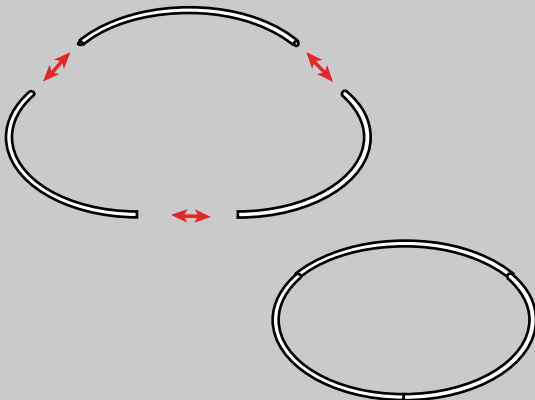


Prior to assembly, lay out drop cloth in designated work location. Before working with fabric, wash hands or put on gloves.

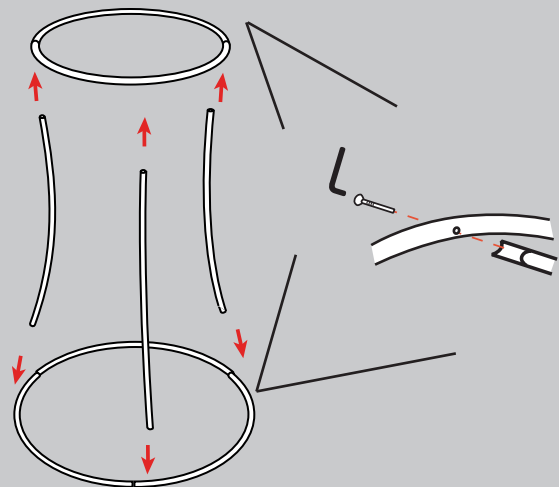
1. Join the two pieces that create the top ring of the Lampshade.



2. Join the three pieces that create the bottom ring of the Lampshade.

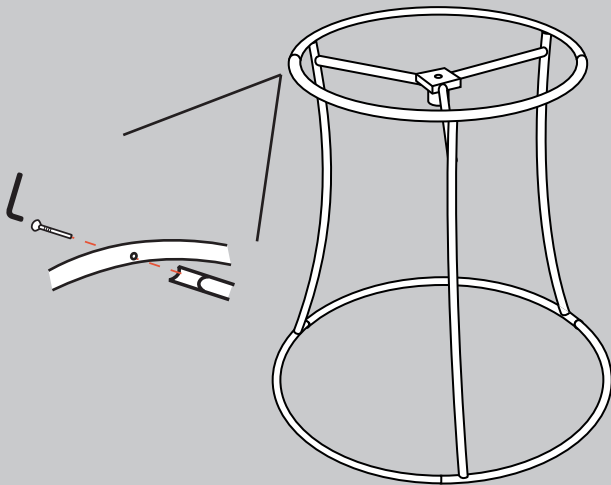


3. Attach the rings to the spreader pieces using an allen key.

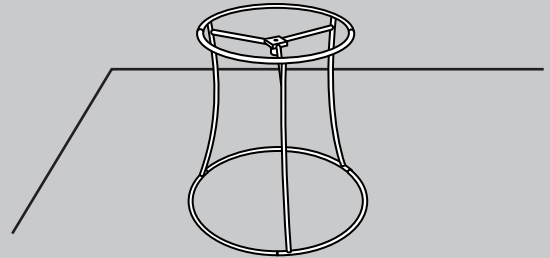


Any and all rights (including, without limitation, copyright, design patent, use patent and trademark) in and to all designs, concepts, renderings, or graphics (collectively, "Design") represented in this document were created by Moss Inc. and remain the sole and exclusive property of Moss Inc. Use of any such Design by the recipient without required purchase is strictly prohibited. ©2010

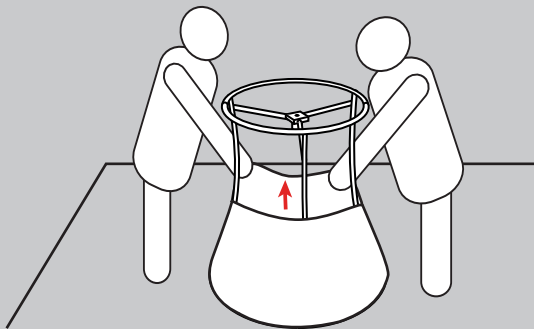
4. Attach the spokes of the hub to the support pieces of the Lampshade using an allen key.



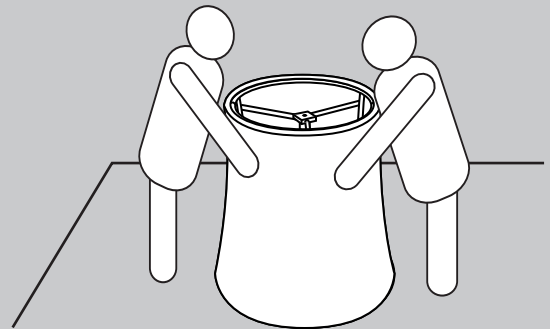
5. Place the structure on the drop cloth.



6. Locate the bottom of the fabric and begin stretching it upwards over the metals. The bottom of the fabric will correspond to the larger metal circle.

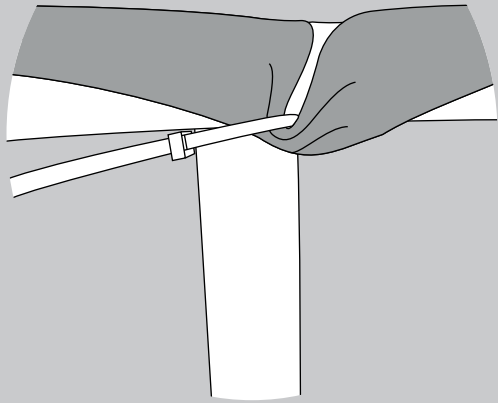


7. Stretch the fabric over the entire frame. Rotate the fabric as needed to align the side seams with the metal spreaders.



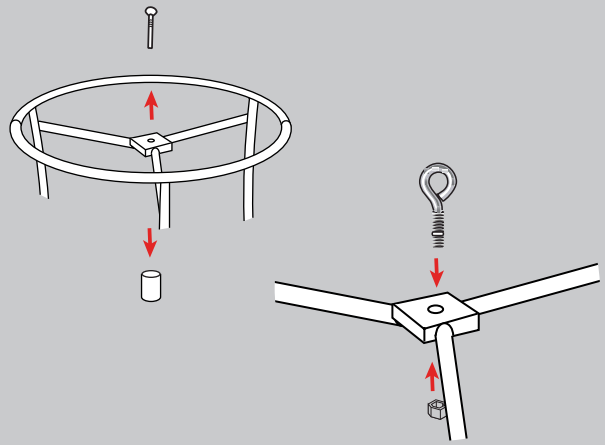
Any and all rights (including, without limitation, copyright, design patent, use patent and trademark) in and to all designs, concepts, renderings, or graphics (collectively, "Design") represented in this document were created by Moss Inc. and remain the sole and exclusive property of Moss Inc. Use of any such Design by the recipient without required purchase is strictly prohibited. ©2010

8. Once you go over the top ring, find the three cloth loops. Tie each loop around its corresponding metal spreader. If using zip-ties, snip the end of the tail close to the eyelet after tightening.

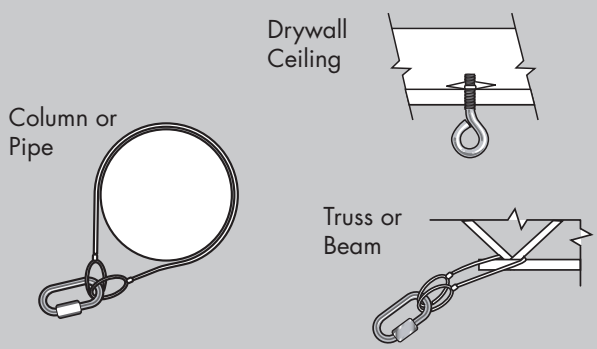


Runner shown in dark gray.

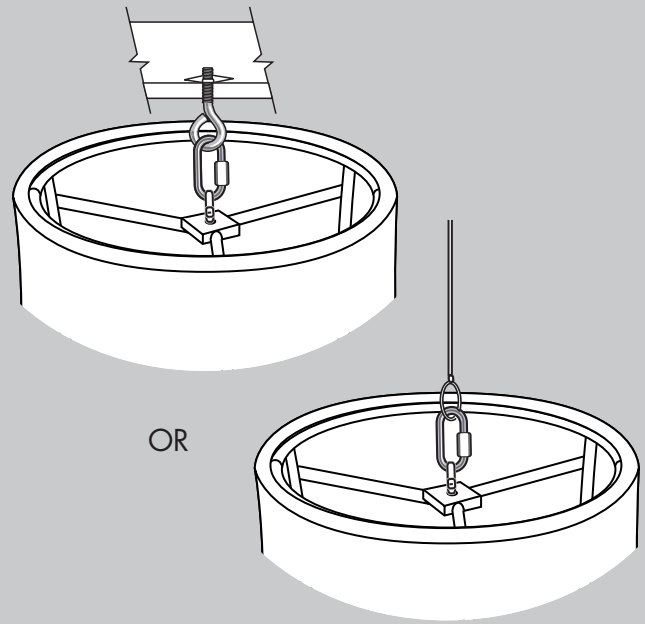
9. If metal "cup" is attached to the square plate on the hub, unscrew and place back in bag. Replace with an eyebolt (1/4" to 5/16" width) and tighten with a nut.



10. Determine your rigging position. Be sure that there is a point to rig to or that you can place a pick-up point in that location. If attaching directly to point, skip to step 11. Examples include:

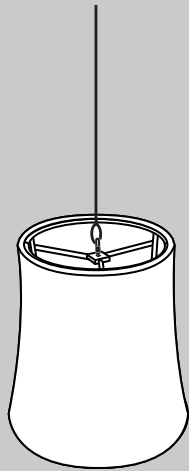


11. Rig lampshade directly to point above or use tie line or cable to raise and attach to point.



Any and all rights (including, without limitation, copyright, design patent, use patent and trademark) in and to all designs, concepts, renderings, or graphics (collectively, "Design") represented in this document were created by Moss Inc. and remain the sole and exclusive property of Moss Inc. Use of any such Design by the recipient without required purchase is strictly prohibited. ©2010

12. Make any height adjustments as needed.
The Lampshade is now complete.



Final Note:

Metals:

After use, dismantle. Each metal is labeled; place back in the corresponding labeled bag. If possible, zip-tie pieces together.

Under NO circumstances should the metals be taped to one another.

Fabric:

Each fabric is labeled on the Pink Inc. tag and should be placed back in the corresponding labeled bag.

Any and all rights (including, without limitation, copyright, design patent, use patent and trademark) in and to all designs, concepts, renderings, or graphics (collectively, "Design") represented in this document were created by Moss Inc. and remain the sole and exclusive property of Moss Inc. Use of any such Design by the recipient without required purchase is strictly prohibited. ©2010