

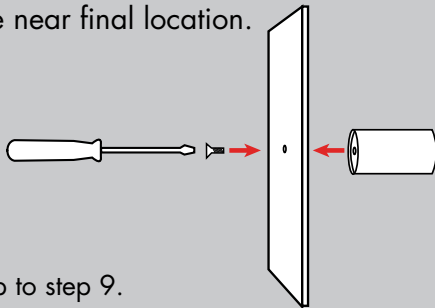
PINK PROVIDES:
1 Upright Asterix Fabric
1 Pole and Base Cover

YOU PROVIDE:
12' Auto-Pole and Base Plate
or Tie line if rigging
Site Plan / Event Layout
Two Person Team
Shears or Diagonal Cutters
Gloves
Plastic Drop Cloth
Zip-Ties



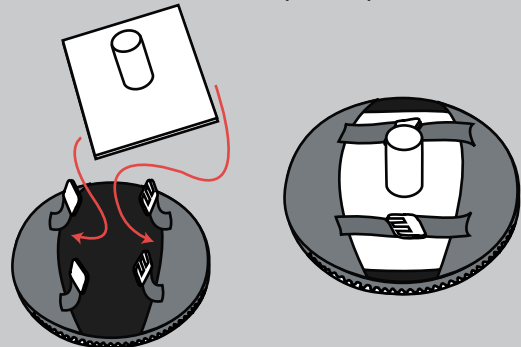
Additional Support Please Call:
212-253-6666 or
After Hours: 646-853-3900

If base plate is not assembled, assemble with nipple. Place near final location.



If rigging, skip to step 9.

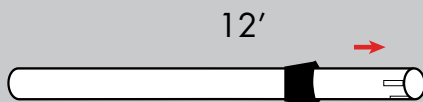
1. Place the Upright Asterix base fabric at the final location. Set the base plate into the base fabric and strap into place.



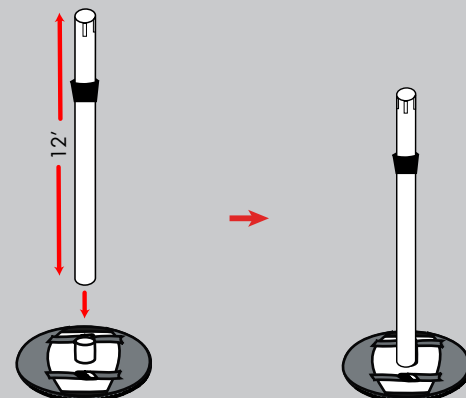
Strapping the base in will prevent it from shifting in later steps.

Prior to assembly, lay out drop cloth in designated work location. Before working with fabric, wash hands or put on gloves.

2. Preset the auto-pole to the correct height.

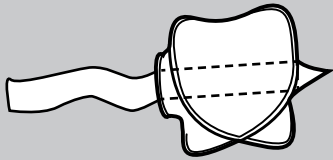


3. Place auto-pole onto assembled base plate.

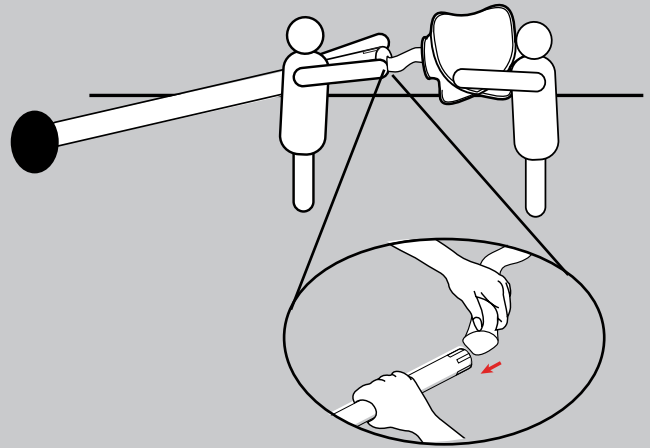


Any and all rights (including, without limitation, copyright, design patent, use patent and trademark) in and to all designs, concepts, renderings, or graphics (collectively, "Design") represented in this document were created by Moss Inc. and remain the sole and exclusive property of Moss Inc. Use of any such Design by the recipient without required purchase is strictly prohibited. ©2010

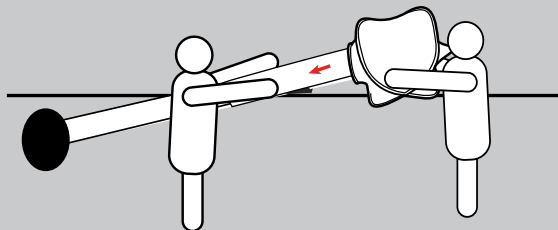
4. Locate the fabric. Inside is a pole sock that is attached to the center of the top. Keep the Asterix flat but pull the sock out through the bottom.



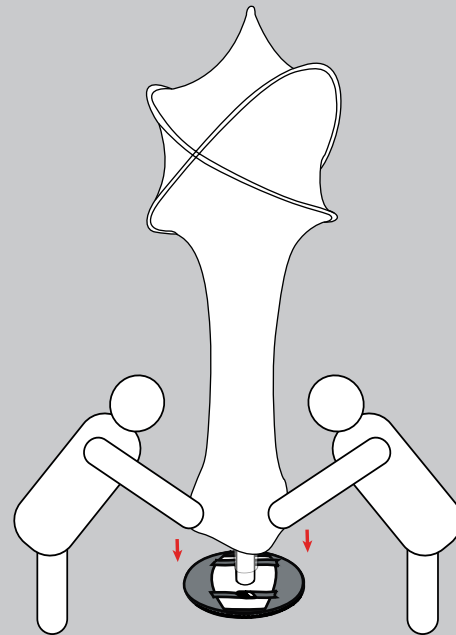
5. Have one person tilt the auto-pole and be ready to take the sock. The other person should hold the Asterix at the end of the pole.



6. Pull the sock as far as it will go down the pole. You will feel resistance when the pole reaches the top.

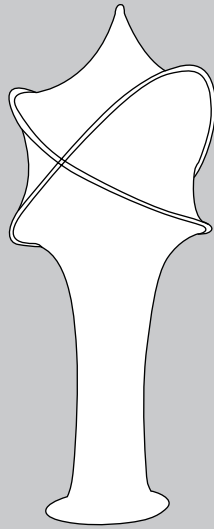


7. Start sliding the Upright Asterix down over the pole. Stand the pole.

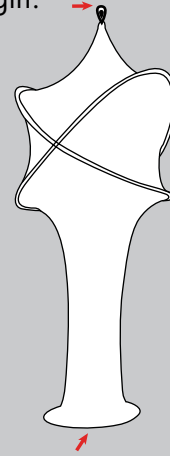


Any and all rights (including, without limitation, copyright, design patent, use patent and trademark) in and to all designs, concepts, renderings, or graphics (collectively, "Design") represented in this document were created by Moss Inc. and remain the sole and exclusive property of Moss Inc. Use of any such Design by the recipient without required purchase is strictly prohibited. ©2010

8. After the bottom is zipped, the Upright Asterix is finished.



9. The Upright Asterix can be rigged by attaching tie line to the loops located at the top and bottom. Be sure it is stretched to its full length.



Loops exaggerated in drawing.

Trouble Shooting:

- If fabric appears wrinkled:
 - * Stretch the pole higher.
- If the top appears over-stretched:
 - * Shorten the pole.
- If the bottom is not on one plane:
 - * Add zip-ties between the base of the fabric and the base cover to areas that appear higher.

Any and all rights (including, without limitation, copyright, design patent, use patent and trademark) in and to all designs, concepts, renderings, or graphics (collectively, "Design") represented in this document were created by Moss Inc. and remain the sole and exclusive property of Moss Inc. Use of any such Design by the recipient without required purchase is strictly prohibited. ©2010