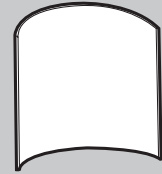


**PINK PROVIDES:**

- 1 Set of Wave Wall Large Metals
- 1 Wave Wall Large Fabric
- Extra Pop Buttons

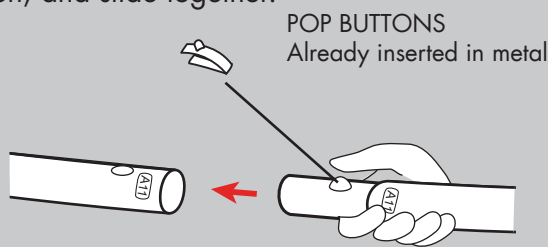
**YOU PROVIDE:**

- Site Plan/Event Layout
- Two Person Team
- Gloves
- Sewing Kit
- Plastic Drop Cloth



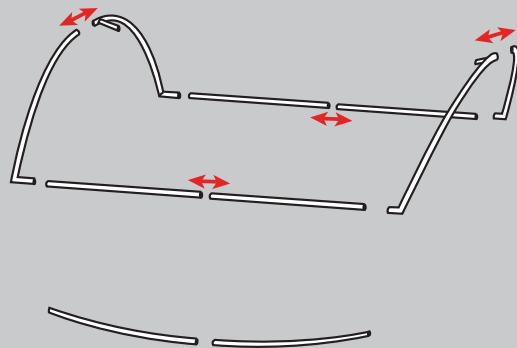
Additional Support Please Call:  
212-253-6666 or  
After Hours: 646-853-3900

Metals are labeled for easy assembly. Simply match the corresponding parts, depress the button, and slide together.

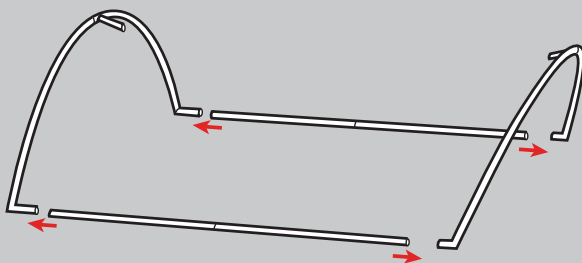


Prior to assembly, lay out drop cloth in designated work location. Before working with fabric, wash hands or put on gloves.

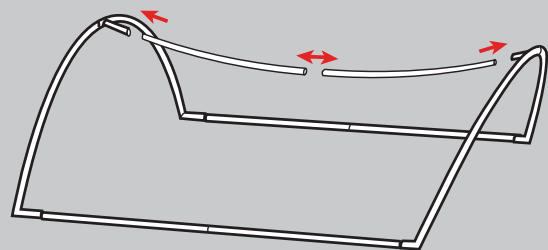
1. Join pieces to create sections. Combine the curved pieces and straight pieces.



2. Join sections. Begin with the curves, followed by the straight supports.

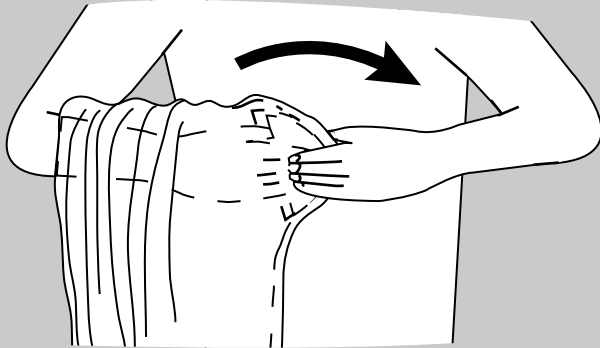


3. Attach the central supports to the curved ends. Join the center last.



Any and all rights (including, without limitation, copyright, design patent, use patent and trademark) in and to all designs, concepts, renderings, or graphics (collectively, "Design") represented in this document were created by Moss Inc. and remain the sole and exclusive property of Moss Inc. Use of any such Design by the recipient without required purchase is strictly prohibited. ©2010

4. Locate the fabric. With the Wall lying down, use two people to spread the fabric. Have each person hold a bottom corner with one hand inside fabric.



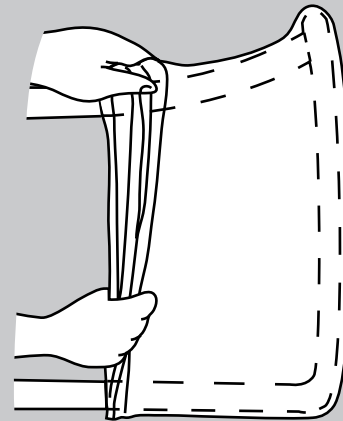
5. Continue holding each corner. Transfer the fabric from one arm to the other so it becomes inside-out.



6. Have each person grasp the bottom corner of the metal with the hand still inside the fabric. This will be the part of the frame that sits 90 degrees to the floor. Continue holding the corner as you begin stretching the fabric over the metal.

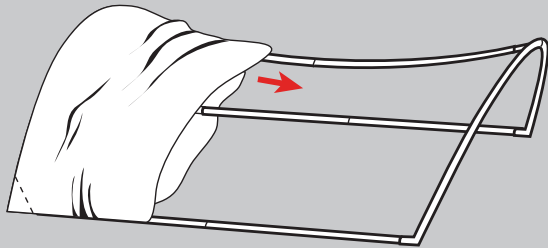


7. Have both people slide the fabric up onto the bottom of the metal and align corners. The zipper runs along the top.

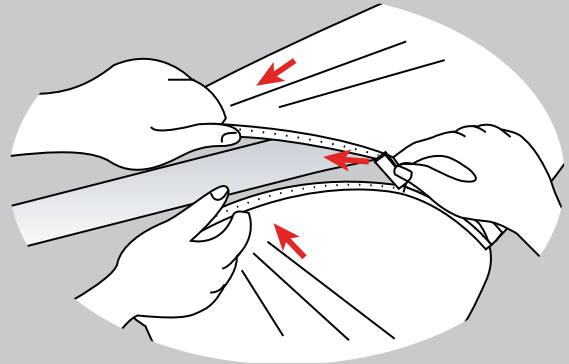


Any and all rights (including, without limitation, copyright, design patent, use patent and trademark) in and to all designs, concepts, renderings, or graphics (collectively, "Design") represented in this document were created by Moss Inc. and remain the sole and exclusive property of Moss Inc. Use of any such Design by the recipient without required purchase is strictly prohibited. ©2010

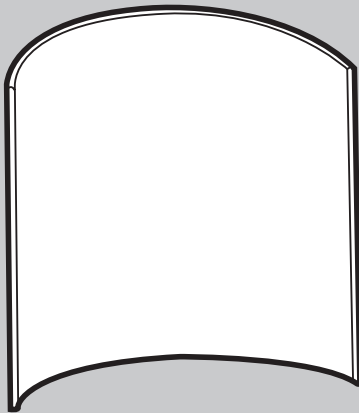
8. Continue sliding the fabric over the metal.



9. Have one person pull the fabric over the metal while the other one zips. The fabric is strong, so we encourage pulling hard!



10. Stand up and place in desired location using both people. Please try not to drag the pieces. Make sure corners and seams are straight.



#### Trouble Shooting:

- If the metals don't seem to be fitting together:
  - \* Keep metals as straight as possible and slide together. Forcing and twisting will only damage the metals.

Any and all rights (including, without limitation, copyright, design patent, use patent and trademark) in and to all designs, concepts, renderings, or graphics (collectively, "Design") represented in this document were created by Moss Inc. and remain the sole and exclusive property of Moss Inc. Use of any such Design by the recipient without required purchase is strictly prohibited. ©2010

Final Notes:

Metals:

After use, dismantle. Each metal is labeled, so please place back in corresponding labeled bag. If possible, zip-tie pieces together.

Under NO circumstances should the metals be taped to one another.

Fabric

Each fabric is labeled on the Pink Inc. tag and should be placed back in the corresponding labeled bag.

Any and all rights (including, without limitation, copyright, design patent, use patent and trademark) in and to all designs, concepts, renderings, or graphics (collectively, "Design") represented in this document were created by Moss Inc. and remain the sole and exclusive property of Moss Inc. Use of any such Design by the recipient without required purchase is strictly prohibited. ©2010