

PINK PROVIDES:

- 1 Set of Large Slope Metals
- 1 Set of Small Slope Metals
- 1 Small Divide Fabric
- Extra Pop Buttons

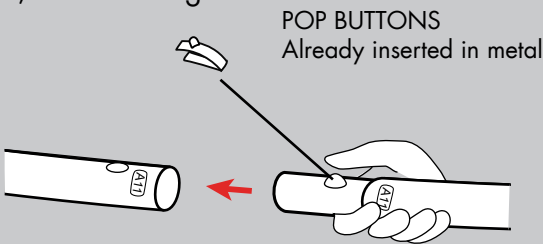
YOU PROVIDE:

- Site Plan/Event Layout
- Three Person Team
- Gloves
- Sewing Kit
- Plastic Drop Cloth
- Allen Key Set

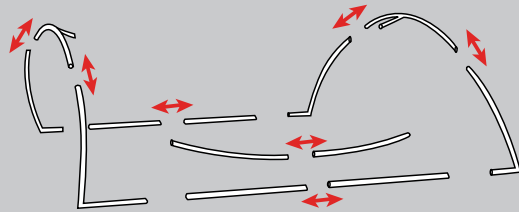


Additional Support Please Call:
212-253-6666 or
After Hours: 646-853-3900

Metals are labeled for easy assembly. Simply match the corresponding parts, depress the button, and slide together.

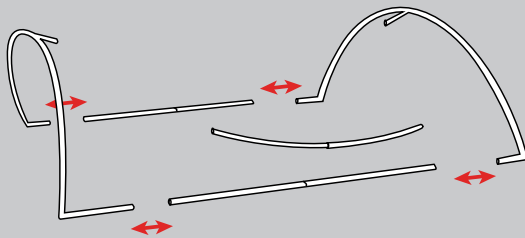


1. Locate the Large Slope and begin assembly. Combine the curved pieces and straight pieces.

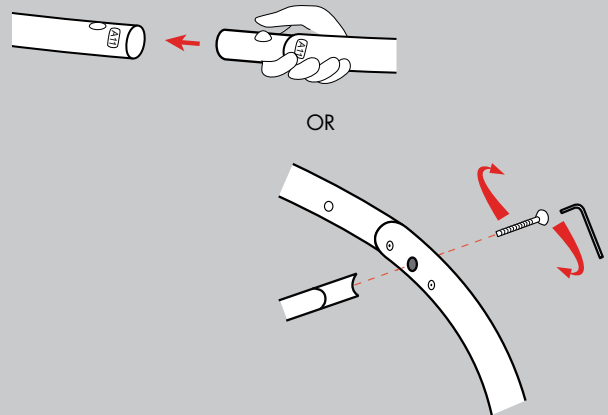


Prior to assembly, lay out drop cloth in designated work location. Before working with fabric, wash hands or put on gloves.

2. Join Sections. Begin with the curves, followed by the straight supports.

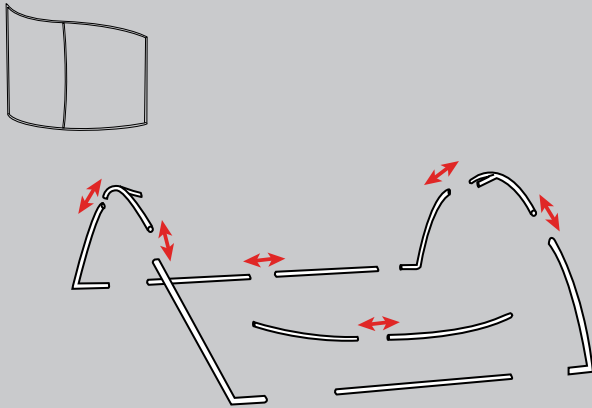


3. Attach the central supports to the curved ends. Join the center last. Depending on the frame sent, the centers will either pop into place or you will need an allen key.

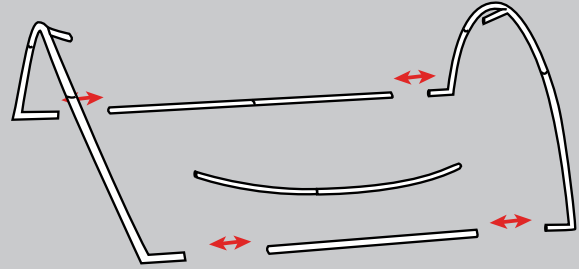


Any and all rights (including, without limitation, copyright, design patent, use patent and trademark) in and to all designs, concepts, renderings, or graphics (collectively, "Design") represented in this document were created by Moss Inc. and remain the sole and exclusive property of Moss Inc. Use of any such Design by the recipient without required purchase is strictly prohibited. ©2010

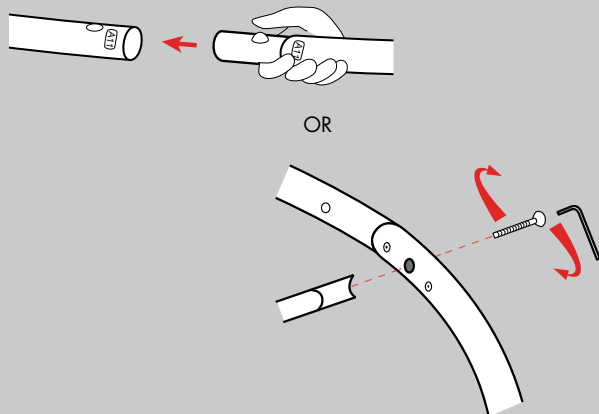
4. Stand the Large Slope and set to the side. Now assemble the Small Slope. Begin by joining the pieces to create sections. Combine the curved and straight pieces. It is very similar to the Large Slope.



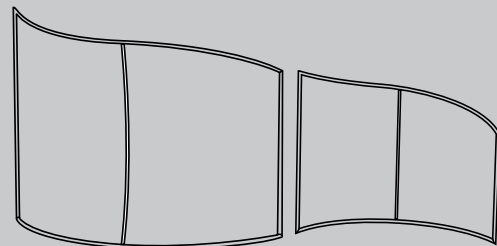
5. Join sections. Begin with the curves, followed by the straight supports.



6. Attach the central supports to the curved ends. Join the center last. Depending on the frame sent, the centers will either pop into place or you will need an allen key.

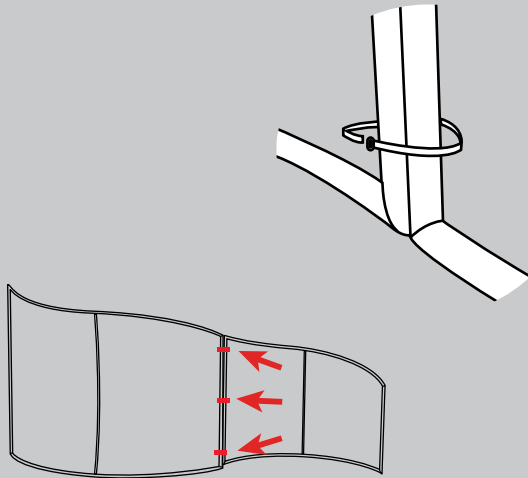


7. Align the two walls. The shape of the curves should be opposite one another as shown below.

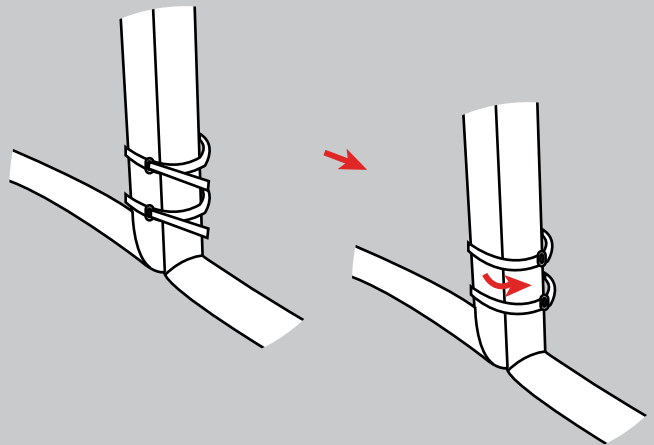


Any and all rights (including, without limitation, copyright, design patent, use patent and trademark) in and to all designs, concepts, renderings, or graphics (collectively, "Design") represented in this document were created by Moss Inc. and remain the sole and exclusive property of Moss Inc. Use of any such Design by the recipient without required purchase is strictly prohibited. ©2010

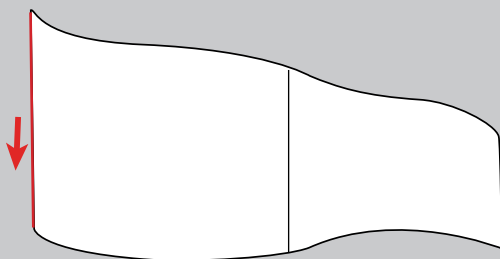
8. Using zip-ties, connect the metals at the top, middle, and bottom. It is best to use 2 zip-ties at the top and 2 at the bottom.



9. It is very important that the tails of the zip-ties are cut off completely and that the eyelet is rotated to be in line with the metals.

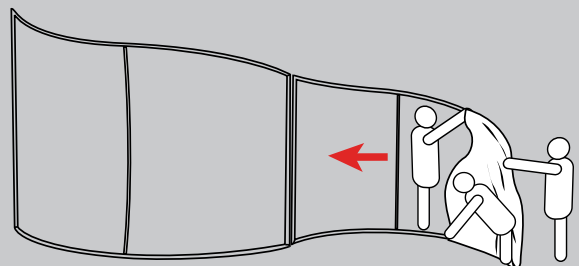


10. Locate the fabric, spread it, and unzip it. The zipper runs along the tall side of the Small Divide. The open zipper ends at the top edge.



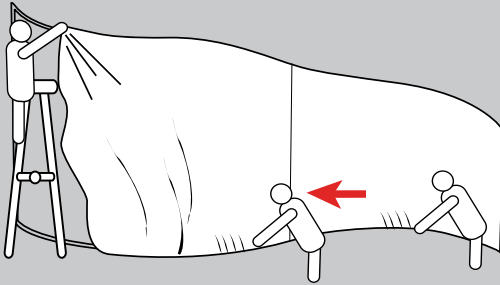
Zipper shown in red.

11. Begin sliding the fabric onto the shortest end of the Small Slope frame. Remember that the person with the zipper end will be running along the top edge.

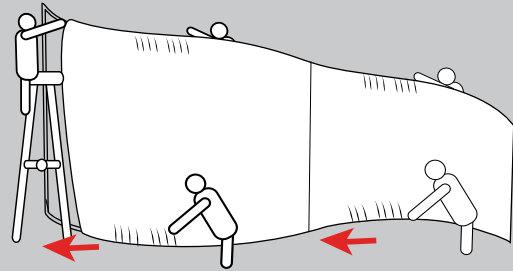


Any and all rights (including, without limitation, copyright, design patent, use patent and trademark) in and to all designs, concepts, renderings, or graphics (collectively, "Design") represented in this document were created by Moss Inc. and remain the sole and exclusive property of Moss Inc. Use of any such Design by the recipient without required purchase is strictly prohibited. ©2010

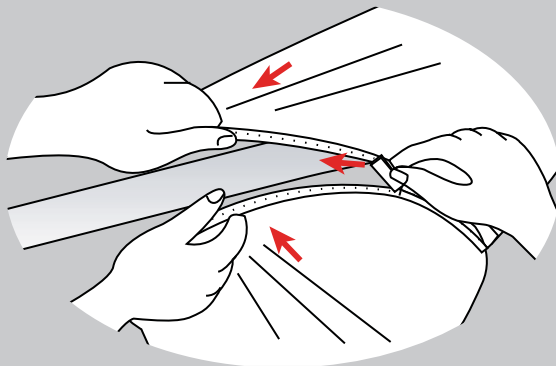
12. As the fabric is slid over the taller parts of the Divide, a ladder may be necessary to continue sliding the fabric along the top.



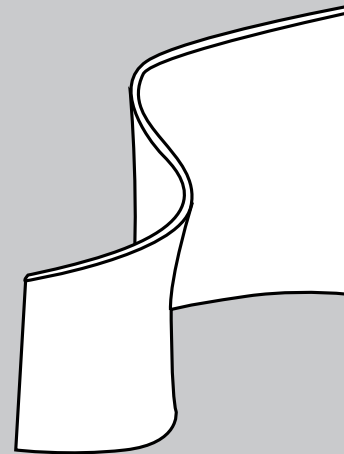
13. The fabric may seem too short. If this happens, go back to the short end and pull and gather fabric until you move the excess towards the large end. This is most effective when one person works the top and another the bottom on alternate sides at the same time.



14. At the end, have one person pull the fabric over the metal while another one zips. The fabric is strong, so we encourage pulling tight!



15. The fabric may seem too short. If this happens, go back to the short end and pull and gather fabric until you move the excess towards the large end. This is most effective when one person works the top and another the bottom on alternate sides at the same time.



Any and all rights (including, without limitation, copyright, design patent, use patent and trademark) in and to all designs, concepts, renderings, or graphics (collectively, "Design") represented in this document were created by Moss Inc. and remain the sole and exclusive property of Moss Inc. Use of any such Design by the recipient without required purchase is strictly prohibited. ©2010

Final Notes:

Metals:

After use, dismantle. Each metal is labeled, so please place back in corresponding labeled bag. If possible, zip-tie pieces together.

Under NO circumstances should the metals be taped to one another.

Fabric

Each fabric is labeled on the Pink Inc. tag and should be placed back in the corresponding labeled bag.

Any and all rights (including, without limitation, copyright, design patent, use patent and trademark) in and to all designs, concepts, renderings, or graphics (collectively, "Design") represented in this document were created by Moss Inc. and remain the sole and exclusive property of Moss Inc. Use of any such Design by the recipient without required purchase is strictly prohibited. ©2010