

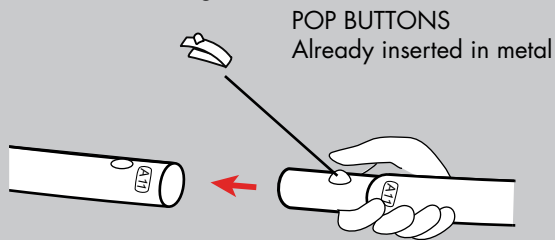
PINK PROVIDES:
1 Set of Pillar Metals
1 Pillar Fabric
Extra Pop Buttons

YOU PROVIDE:
Site Plan/Event Layout
Two Person Team
Gloves
Sewing Kit
Plastic Drop Cloth
Allen Key Set

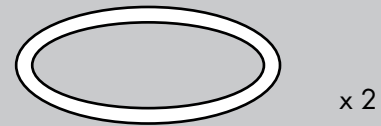


Additional Support Please Call:
212-253-6666 or
After Hours: 646-853-3900

Metals are labeled for easy assembly. Simply match the corresponding parts, depress the button, and slide together.

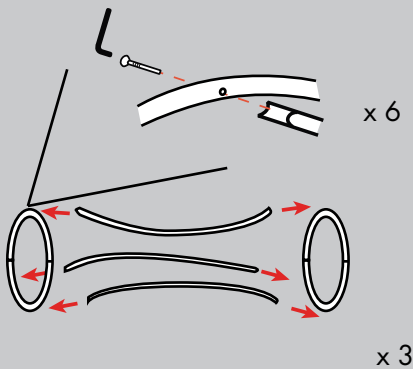


1. Locate the top and bottom rings of the Pillar.



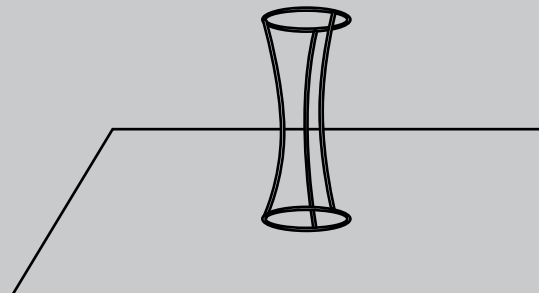
Prior to assembly, lay out drop cloth in designated work location. Before working with fabric, wash hands or put on gloves.

2. Using the allen key set, attach the rings to the support pieces.



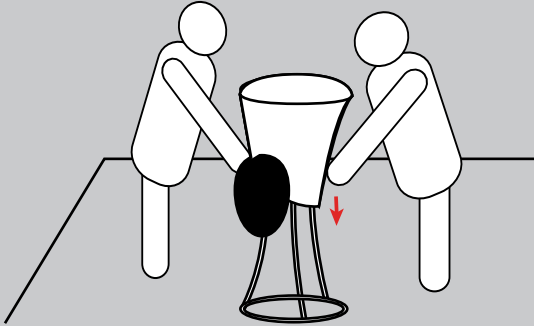
Be sure to match the labels. This is very important.

3. It is easiest to set the metals into the fabric. Place the metals on top of the drop cloth.



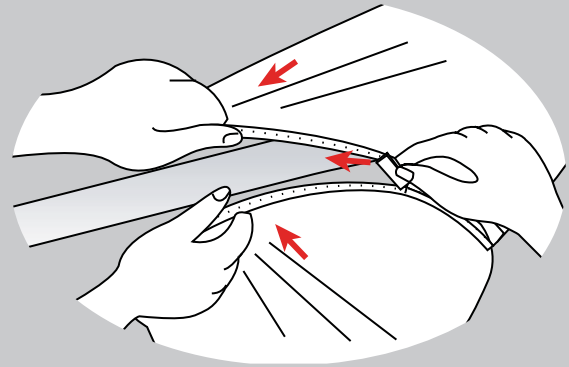
Any and all rights (including, without limitation, copyright, design patent, use patent and trademark) in and to all designs, concepts, renderings, or graphics (collectively, "Design") represented in this document were created by Moss Inc. and remain the sole and exclusive property of Moss Inc. Use of any such Design by the recipient without required purchase is strictly prohibited. ©2010

4. Locate the fabric. Move the black bottom "flap" out of the way as you stretch the fabric down the metals.

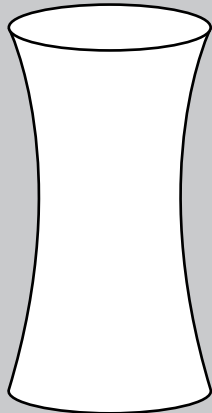


The zippered end is the bottom. Once the fabric is spread evenly over the top, flip over to close zipper.

5. Have one person pull the fabric over the metal while the other one zips. The fabric is strong, so we encourage pulling hard!



6. Flip over again so the zipper side is down. The Pillar is now complete.



Final Note:

Metals:

After use, dismantle. Each metal is labeled; place back in the corresponding labeled bag. If possible, zip-tie pieces together.

Under NO circumstances should the metals be taped to one another.

Fabric:

Each fabric is labeled on the Pink Inc. tag and should be placed back in the corresponding labeled bag.

Any and all rights (including, without limitation, copyright, design patent, use patent and trademark) in and to all designs, concepts, renderings, or graphics (collectively, "Design") represented in this document were created by Moss Inc. and remain the sole and exclusive property of Moss Inc. Use of any such Design by the recipient without required purchase is strictly prohibited. ©2010